

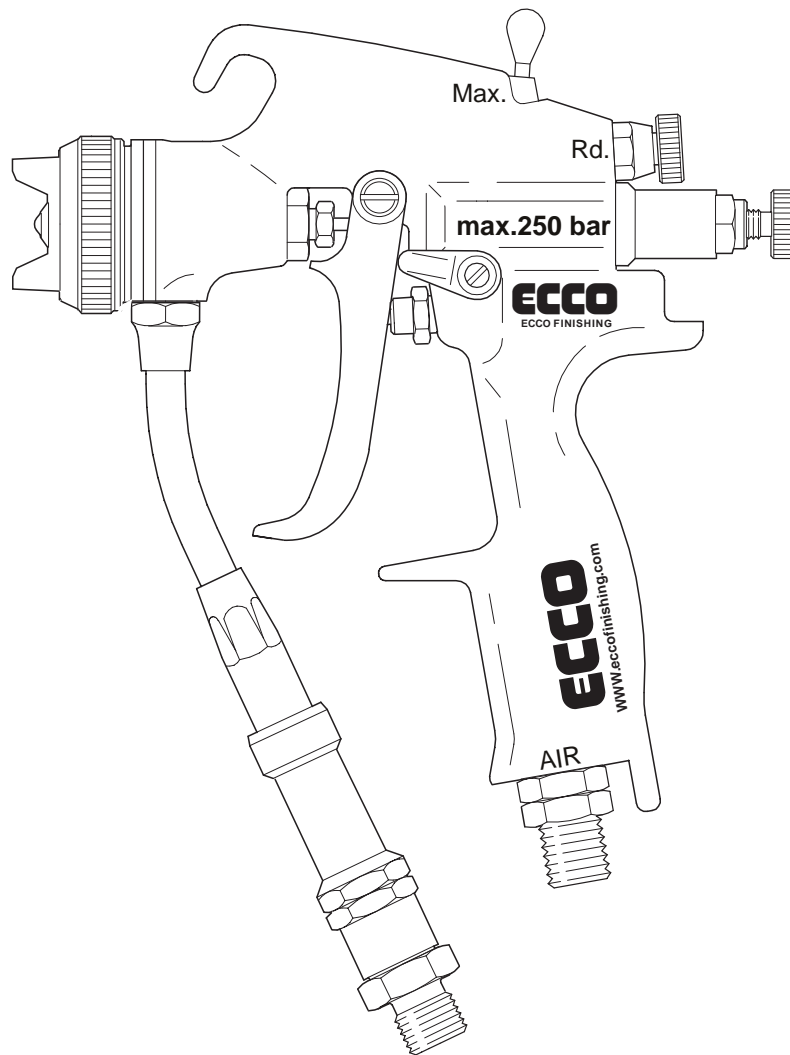
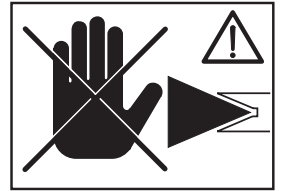
Spare parts list for
Air Assist Spray Gun

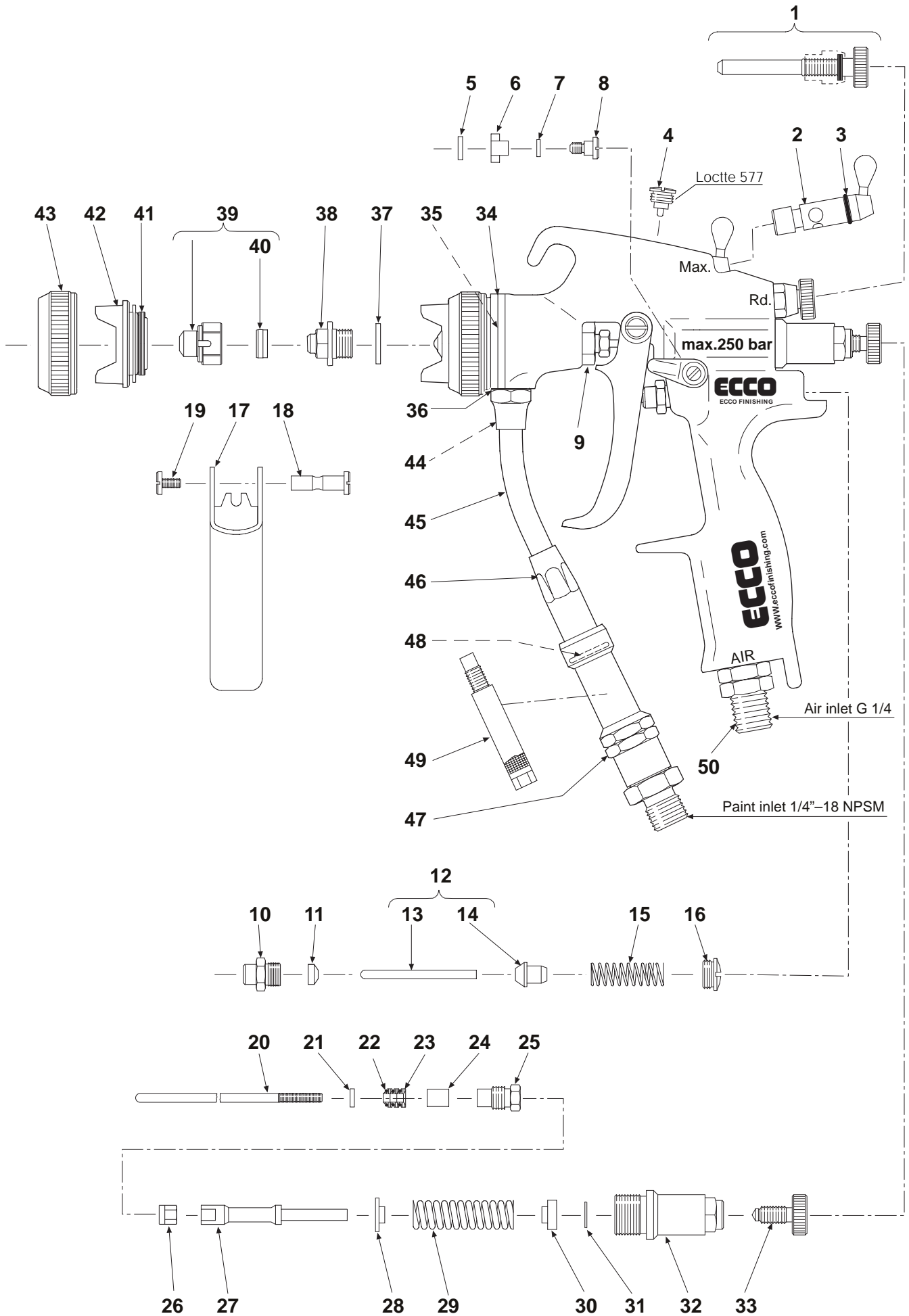


ESL 12/02-27

EccoMix.... Prod. No. 8611 4120 00

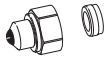
Max. atomizing air pressure..... 8 bar
Max. paint pressure..... 250 bar





Optional equipment

Spray Tip

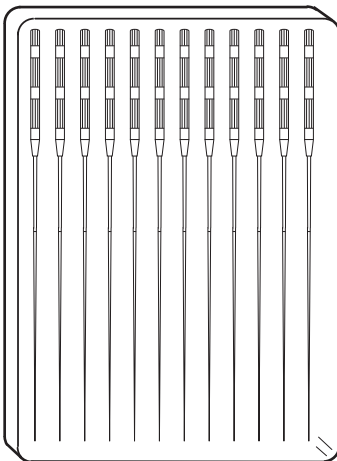


Orifice diameter	Spray angle	Part number	Capacity at fluid pressure 103bar ¹⁾	Recommended strainer in delivery circuit
inch			l/min	mesh
0.009	20°	6810 0920 00	0.19	100
	40°	6810 0940 00		
	60°	6810 0960 00		
0.011	20°	6810 1120 00	0.38	100
	40°	6810 1140 00		
	60°	6810 1160 00		
0.013	20°	6810 1320 00	0.57	100
	40°	6810 1340 00		
	60°	6810 1360 00		
0.015	20°	6810 1520 00	0.76	60
	40°	6810 1540 00		
	60°	6810 1560 00		

1) When spraying with water.

Recommended spray tips for different paint types

Paint type	Normal spray viscosity sec (SIS cup 4)	Recommended tips inch
Lacquer	15–20	0.009–0.013
Acid-hardening	15–25	0.009–0.013
Shop primer	13–25	0.011–0.015
Polyurethane	25–60	0.011–0.021
Alkyd lacquer	25–60	0.011–0.018
Zinc epoxy	25–60	0.015–0.021
Modified vegetable oil	60–100	0.011–0.021



Cleaning needle set part number 6003 8001 00

Cleaning needle set part number 6003 8001 00 for spray tip

Spray tip cleaning broaches to cleaning blocked spray tips, 12 pieces included, length 21 mm dia. 0.10 mm with spiral handles.